

State of Wyoming Corner Record

(in compliance with the CORNER PERPETUATION AND FILING ACT, Wyoming Statutes, 1977, Section 36-11-101, et. seq., and the Rules and Regulations of the Board of Registration for Professional Engineers and Professional Land Surveyors)

Reverse side of this form may be used if more space is needed.

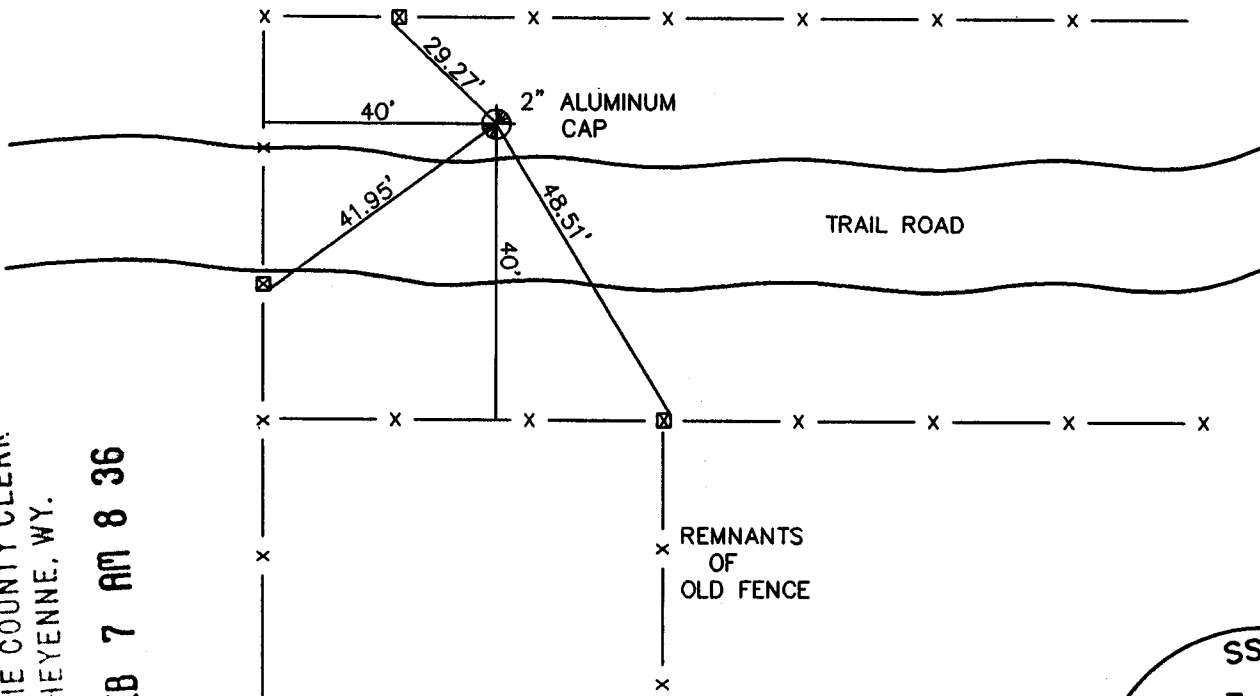
Record of original survey and citation of source of historical information (if corner is lost or obliterated). Description of corner monumentation evidence found and/or monument and accessories established to perpetuate the location of this corner. Sketch of relative location of monument, accessories, and reference points with course and distance to adjacent corner(s) (if determined in this survey). Method and rationale for reestablishment of lost or obliterated corner.

GLO RECORD: SET A CONGLOMERATE BOULDER 16" X 12" X 5" FOR CORNER TO SECTIONS 13,14,23, & 24.

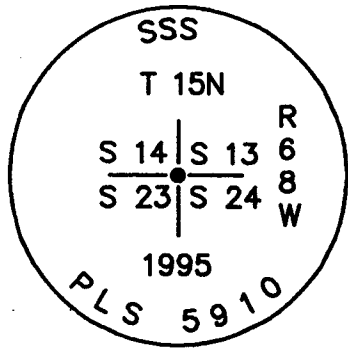
MONUMENT FOUND: NOTHING

MONUMENT SET: SET A 5/8" X 24" REBAR WITH 2" ALUMINUM CAP, CAP MARKED AS SHOWN. ACCEPTED E-W FENCELINE, SET MONUMENT AT 40' NORTH OF FENCE AND MIDWAY BETWEEN SECTION CORNERS.

REFERENCES: SET P.K. NAILS IN FENCE POST.



197527
 LARAMIE COUNTY CLERK
 CHEYENNE, WY.
 '97 FEB 7 AM 8 36



Date of Field Work: 7-5-95 Office Reference: 95154

CROSS INDEX DIAGRAM

A	1	2	3	4	5	6	7	8	9	10	11	12	13	14	15	16	17	18	19	20	21	22	23	24	25
B																									
C	6		5		4		3		2		1														
D																									
E																									
F																									
G	7		8		9		10		11		12														
H																									
I																									
J																									
K																									
L	18		17		16		15		14		13														
M																									
N																									
O																									
P	19		20		21		22		23		24														
Q																									
R																									
S																									
T	30		29		28		27		26		25														
U																									
V																									
W																									
X	31		32		33		34		35		36														
Y																									
Z																									

Firm/Agency, Address

STEIL SURVEYING SERVICES, LLC
1102 WEST 19th STREET
CHEYENNE WY 82001

Telephone Number: **(307) 634-7273**

This corner record was prepared by me or under my direction and supervision.
 SEAL & SIGNATURE



BOOK 1443

Corner Name: NORTHWEST CORNER Section: 24 T 15N R 68W : 6th P.M. Cross-Index No.: N-21

SBRPEPLS/PLSW: March 1994

0938